

HSE LIFE

15

SPRING EDITION 2021

HEALTH, SAFETY AND
ENVIRONMENT NEWSLETTER
for the Oil and Gas industry

NEWSLETTER

New HSE item is **now available!**

ATEX

WORKING IN EXPLOSIVE ENVIRONMENTS

ATEX are European directives for explosive environments and situations where there is a risk of gas and dust explosion.

In this newsletter you can read all about HSElife NL documents that are available to you.

In this edition

1. ATEX
2. TOOLS AND DOCUMENTS
3. INCREASE AWARENESS, DISCOVER HAZARDS
4. YOUR KNOWLEDGE
5. OPTIONAL MODULES



ALL THE INFORMATION YOU NEED TO WORK SAFELY

ATEX WORKING IN EXPLOSIVE ENVIRONMENTS!

As a part of our yearly activities, in cooperation with the NOGEPa Workgroup, we are proud to present the latest addition in the HSElife NL Health, Safety and Environment items library: **ATEX, WORKING IN EXPLOSIVE ENVIRONMENTS!**

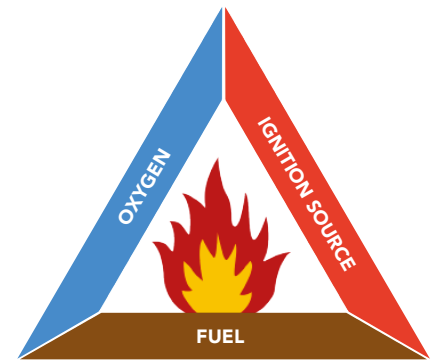
ATEX is the abbreviation for the French words ATmosphères EXplosibles. The purpose of the ATEX directives is to ensure the safety and health of the workforce in areas with explosion hazards. This involves the control of conditions in an explosive atmosphere, in situations where it is not possible to eliminate the explosion hazard by substitution of substances.

Explosive environments

There are three basic factors that can cause an explosion.

We call this the fire triangle:

- combustible gas, vapor, mist or dust
- oxygen or air
- ignition source (electrical or a non-electrical ignition source)



A6 DIGITAL FOLDER, ONSCREEN PRESENTATION AND VIDEO WITH QUESTIONNAIRE

TOOLS AND DOCUMENTS

PREVENT INCIDENTS!

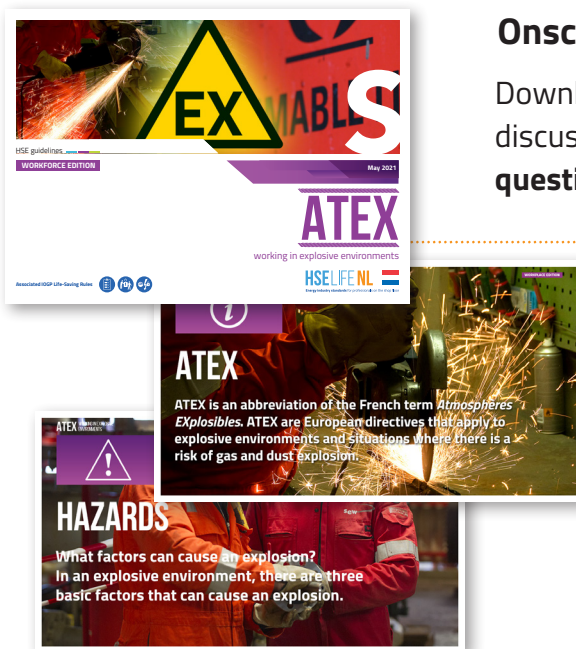
For you as a HSElife NL member, we have developed several different tools and documents that can assist you in your daily work activities. Whether you are just looking for the right information about operational LIMIT LEVELS, proper Personal Protective Equipment or you want to pay special attention on **ATEX, WORKING IN EXPLOSIVE ENVIRONMENTS**, together with your team... **we got it covered!**



A6 digital folder

In the digital folder on ATEX you will read what your employer has to do so that **you can work safely** in an explosive environment, how to **prevent explosions** and **what measures you can take** to counteract explosion hazards. As always, at the back of the folder you can find the **5 important points to remember**.

TOOLS AND DOCUMENTS



Onscreen presentation

Download and use the onscreen presentation to prepare and discuss this subject with your team members. **Don't forget to ask 5 questions at the end to confirm that everyone is on the same page!**

Video and the questionnaire

Not really a presenter kind of guy/girl? **No problem, just play the video!** The video contains the same information as the onscreen presentation. Your team always has access to all the information on **ATEX, WORKING IN EXPLOSIVE ENVIRONMENTS**. You can also ask them to watch the video at home and to do a quick test (questionnaire). In that way you can be certain that they are familiar with this HSE item safety information.

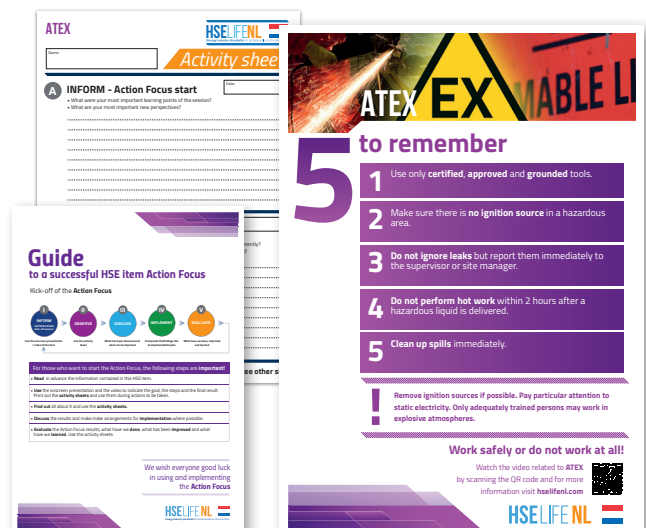
ACTION FOCUS GUIDE, POSTER AND ACTIVITY SHEETS

INCREASE AWARENESS, DISCOVER HAZARDS

There is no better way to bring a new HSE item to the attention than to get started with it! Preferably for a couple of weeks to really give the item the attention it deserves.

The Action Focus allows you to zoom in on the specific safety aspects related to working with ATEX, WORKING IN EXPLOSIVE ENVIRONMENTS. Combine it with the other tools and documents (as described above) and **increase awareness** and make it possible to **discover hazards**. All you need to do with your team is focus and have an open conversation with each other. Download and print the ACTION FOCUS **guide**, **poster** and **activity sheets** and organize a meeting or a walk-around to identify, discuss and remove potential hazards when working with these metals.

[CLICK HERE TO VISIT THIS ITEM PAGE ON HSELIFE NL >](#)



YOUR KNOWLEDGE

The **HSElife LEARNING AND REGISTRATION SYSTEM**, LARS for friends, is the latest edition of the online training and certification registration system. It can be used on any device (desktop and mobile) to automatically register your training certificate and to control your competence by authorized personnel.

KEY FEATURES

- 24/7 overview of training results
- New training modules addition
- Industry-wide overview
- Personal info management
- Secure SSL information
- Scan QR code for secure verification
- link to your own CMS (via API) and vice versa
- by now, more than 10,000 registrations have been done within LARS

HSE LIFE LARS 3.0
LEARNING AND REGISTRATION SYSTEM



optional module 1 (on request)



HSE LIFE
Academy



ALWAYS AT THE TOP

What you've learned in the last few weeks disappears just as easily... if not maintained. **HSE LIFE ACADEMY** is a scientifically proven training support tool that maintains your level of training knowledge where it should be - at **the highest possible level**.

HSE LIFE ACADEMY CAN BE USED ON ANY DEVICE > SMARTPHONE, TABLET, COMPUTER,...

optional module 2 (on request)

4 OPTIONS TO COMMUNICATE

Another additional tool of HSElife NL is **OPSLIFE MESSENGER 2.0**. It's an interactive **TWO WAY COMMUNICATION SYSTEM** that allows the Organization to keep their employees **ALERT, MOTIVATE** them to participate, **ACTIVATE** them to think and to contribute towards achieving the goals of the Organization and also to **IMPROVE** their work processes, safety and company culture, ... **ON-DEMAND!**

OPSLIFE Messenger 2.0
inform > motivate > activate > improve



HSE LIFE HELPDESK

Need assistance in using LARS or want to implement this registration system in your organization in the right way? Let us know by sending an email to info@thewatgroup.com



HSE LIFE NL

Energy Industry standards for professionals on the shop floor

hseifenl.com