

HSELIFE

12

AUTUMN EDITION 2020

HEALTH, SAFETY AND
ENVIRONMENT NEWSLETTER
for the Oil and Gas industry

NEWSLETTER

New HSE item is **now available!**

METHANOL

Methanol is one of the most widely used raw materials in the chemical industry. Read in this newsletter all about HSElife NL documents and tools that are available for you.

In this edition

1. METHANOL
2. TOOLS AND DOCUMENTS
3. ACTION FOCUS

4. NEW!!! REGISTRATION AND USAGE INFORMATION OF HSELIFE NL
5. NEW!!! ARTIFICIAL INTELIGENCE - AT YOUR SERVICE!

SAFE
SUPPORTING
& READY
TO USE!

ALL THE INFORMATION YOU NEED TO WORK SAFELY

METHANOL

As a part of our yearly activities, in cooperation with the NOGEPa Workgroup, we are proud to present the latest addition in the HSElife NL Health, Safety and Environment items library: **METHANOL!**

In Natural Gas extraction, Methanol can be injected into the process to prevent the formation of hydrate (ice-like blockage in the process) in transport pipes. Methanol is a substance that easily evaporates. Both the liquid and the vapor are highly flammable.

This means that Methanol can be extremely hazardous, therefore it is very important that you know what measures to take in order to work safely and prevent incidents.



A6 DIGITAL FOLDER, ONSCREEN PRESENTATION AND VIDEO WITH QUESTIONNAIRE

METHANOL TOOLS AND DOCUMENTS

PREVENT INCIDENTS!

For you as a HSElife NL member, we have developed several different tools and documents that can assist you in your daily work activities. Whether you are just looking for the right information about operational LIMIT LEVELS, proper Personal Protective Equipment or you want to pay special attention on Methanol, together with your team... **we got it covered!**



A6 digital folder

The Methanol digital folder provides you with direct and clear information about **the characteristics** of Methanol, **the potential hazards** and ways to **protect yourself**. The folder also contains information on **what to do** in the unlikely case that you or your colleagues are exposed to Methanol.

As always, at the back of the folder you can find the **5 important points to remember**.

METHANOL TOOLS AND DOCUMENTS

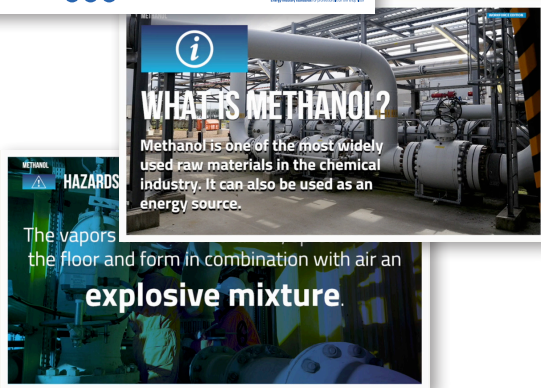


Onscreen presentation

Download and use the onscreen presentation to prepare and discuss this subject with your team members. **Don't forget to ask 5 questions at the end to confirm that everyone is on the same page!**

Video and the questionnaire

Not really a presenter kind of guy/girl? **No problem, just play the video!** The video contains the same information as the onscreen presentation. Your team always has access to all Methanol information. You can also ask them to watch the video at home and to do a quick test (questionnaire). In that way you can be certain that they are familiar with the Methanol safety information.



ACTION FOCUS GUIDE, POSTER AND ACTIVITY SHEETS

METHANOL ACTION FOCUS

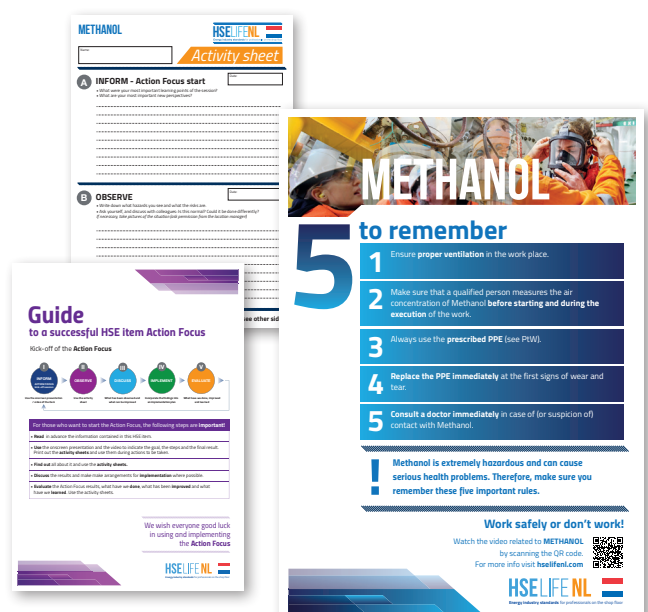
INCREASE AWARENESS, DISCOVER HAZARDS

There is no better way to bring a new HSE item to the attention than to get started with it! Preferably for a couple of weeks to really give the item the attention it deserves.

The **Action Focus** allows you to zoom in on the specific safety aspects related to working with Methanol. Combine it with the other Methanol tools and documents (as described above) and **increase awareness** and make it possible to **discover hazards**. All you need to do with your team is focus and have an open conversation with each other.

Download and print the **ACTION FOCUS guide, poster and activity sheets** and organize a meeting or a walk-around to identify, discuss and remove potential hazards when working with Methanol.

[CLICK HERE TO VISIT METHANOL PAGE ON HSELIFE NL >](#)



**NEW
SUPPORT
TOOL**

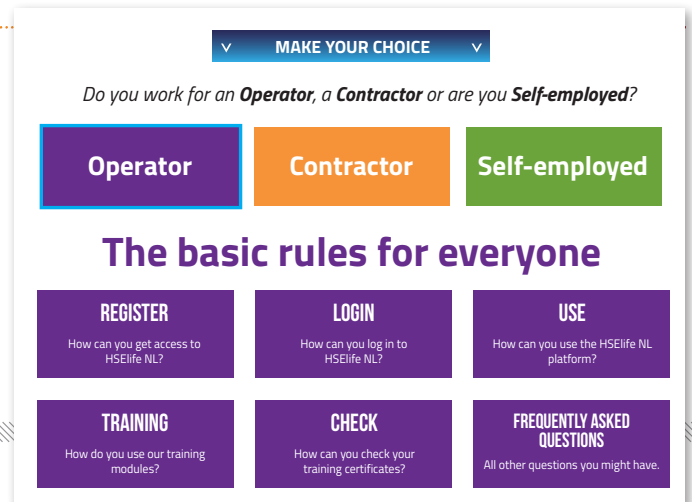
REGISTRATION AND USAGE INFORMATION

GET THE MOST OUT OF HSELIFENL

ALWAYS ONLY TWO CLICKS AWAY

When you become a member of HSElife NL we fully support you. We have arranged everything so that you are always just two clicks away from the information that is relevant to you.

No matter what question you have, you will find the answer in no time! We offer you help with registration and login, using the HSElife NL platform, using training modules and checking your training certificates. Of course we have listed the most frequently asked questions for you.



ARTIFICIAL INTELLIGENCE

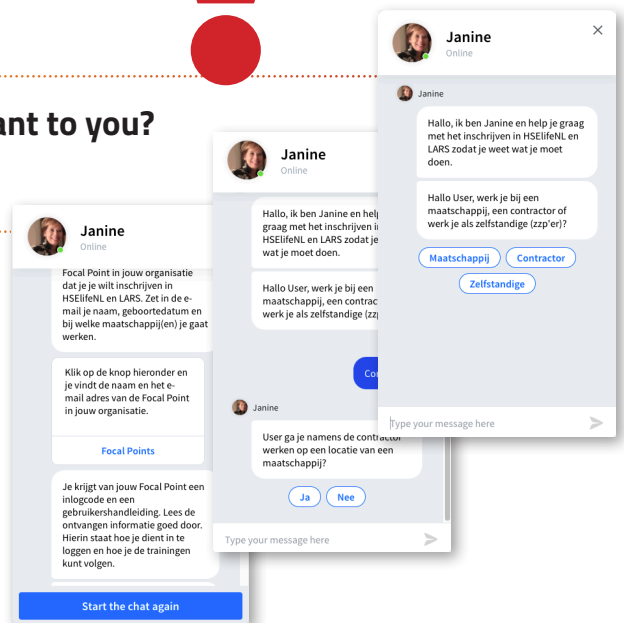
AT YOUR SERVICE!

**NEW
SUPPORT
TOOL**

START A CONVERSATION

Don't know where to find the information that is relevant to you? Ask Janine! At least, the artificial version of her.

It has always been possible to contact our Helpdesk 24/7 in case of questions by phone or e-mail. But thanks to artificial intelligence we can now support you even further. We processed frequently asked questions in a chatbot function on our website. We continue to optimize the knowledge of our 'artificial Janine' in order to be able to support you in the best possible way. **Anywhere, anytime.**



HSELIFE HELPDESK

Need assistance in using LARS or want to implement this registration system in your organization in the right way? Let us know by sending an email to info@thewatgroup.com



HSELIFE NL

Energy Industry standards for professionals on the shop floor

hselifenl.com